




# Second Chance

THE BONES WERE THERE, BUT NOT THE PERSONALITY.  
NEW OWNERS LOOKED TO THE ORIGINAL ARCHITECT TO  
INFUSE THIS CAPE COD HOME WITH COASTAL CHARACTER.

Writer **Todd Keith** Photographer **Eric Roth** Field editor **Lynda Sutton**





**GRACIOUS ENTRY** Sea-blue walls introduce the Cape-inspired palette, while the intricate woodwork of the balustrade keys into the home's exquisite millwork.



T

This Massachusetts house got it very nearly right on the first try. Architect Thomas Catalano created a striking butterfly design, taking advantage of an envious view of Cape Cod and Nantucket Sound. “But three-quarters of the way through the construction, the original owners realized they were not going to be here permanently,” Catalano says. As a result, the house, which ultimately lacked a charming personal touch, was put up for sale. “The new owners took a longer-term approach,” says Catalano, who notes that their passion for the local vernacular and a desire to share the serene setting with friends and family gave the house “the potential to be extraordinary.” Catalano was brought on board again to enrich the house with spot-on details that turned it into a down-to-earth-but-dazzling vacation home.

**ARCH APPEAL** Handsome, deep archwork, which opens the formal dining room to the sunny front entry hall, *above*, is carried throughout the house in the form of built-ins, niches, and windows. **LET IN THE LIGHT** Light floods the downstairs entry from both floors because the upper balcony, *right*, opens to the hall below.





**HAVE A SEAT** A built-in bench under the bay window, *left*, adds a casual touch to the sunny breakfast nook.

**KITCHEN CLASSIC** Hunky pendant lights, *opposite*, echo the traditional lines of the lintel and brackets over the oven, as well as the carved capitals and recessed panels on the island.

## Range of change

To put their touch on the house, the new owners worked with Catalano to add much-needed detail. Floors were refinished, and lighting was upgraded and changed. The homeowners added sconces, augmented the millwork and cabinetry, and fully redecorated the house from top to bottom. Nearly all the rooms gained more elaborate molding and millwork, painted a clean bright white.

Inside the front door, a striking lattice-grid staircase railing was installed to transform the entry hall into an appropriately detailed introduction. There were minor structural alterations as well. An outdoor space bounded by four columns was enclosed to become a screen porch with interchangeable glass and screen panels. And because the family entertains frequently, a welcoming but elegant

atmosphere was just as important as the architectural details. Interior designers Nicole Kuckly Perez and her father, Martin Kuckly, who had worked with the new owners on a previous home, helped them create an interior that suits the seaside. “They were involved in every element and choice,” Perez says, “from the colors to the trim and all the architectural details. The house sits on the water with great water views, so they wanted blues to be a big part of the color scheme. They wanted an elegant beach feeling that conveys warmth and is comfortable, even on a blustery January weekend.

“This house has a shingled look, but the rooms are far from what I’d call ‘cottagey.’ It’s a grand home, and the decor needed to be equally substantial, elegant, and grand.”

## FINE FINISH

A custom-clad vent hood gives a range wall a seamless, chic look—and prevents yards of cold stainless steel from overpowering the room.



## SMART SEATING

A built-in window seat takes full advantage of the view and uses space efficiently.





## COASTAL LINES

ARCHITECT THOMAS CATALANO DISCUSSES THE ESSENCE OF CAPE COD STYLE.

**Q** How do you describe the architectural background of this style?

**A** For residential architecture in the 19th century, Cape Cod was perhaps the only domestic style other than the work of the early proponents of the Shingle-style design. White cedar shingles are native materials, but their use also stemmed from an attempt to have an organic building skin that was expressive of what's going on inside.

**Q** Did this setting challenge your approach?

**A** I think the views here are spectacular, but you have to be careful to not let the view overwhelm everything else. You root the house to the site and bring the outside spaces surrounding the home into the house. That way, the indoor spaces are connected with the outside to take advantage of the setting on your own terms.

**Q** What design expectations does the location present?

**A** We tried to be sensitive to the context of the site. There's an established setting here of shingled houses in a Cape Cod style. Ideally it shouldn't look like a new house.

## All about the light

"We started with an undeveloped site on an inlet with an east-southeast view, so one of the challenges was getting sun into the house," Catalano says. "The butterfly design orients rooms to allow in as much light as possible, especially in summer when you have light from early morning until late, late at night. And with the relationship between the pool, porch, and library, a butterfly plan just fit the land—it even let us use the garage wing as a privacy shield for the family room area."

Some parts of the house, such as the dining room and kitchen, balance large water-facing windows with interior walls. But in the family room and living room, that balance tilts toward the outdoors to take advantage of the views and to admit as much light as possible, maximizing the sun's warmth during colder seasons.

**ROOM TO RELAX** Just off the kitchen, a large family room, *opposite*, provides expansive views of the cape; wicker and a summery blue-and-white palette add a welcoming, informal touch.

**PRIVATE RETREAT** Stairs from the family room to the master bedroom, *above*, are detailed with built-ins and intricate millwork.





**GATHERING PLACE** The pool house and pergola offer escape from summer heat, while columns connect stylistically with the loggia.

## ARTFUL ADDITION

A simple open-air structure can turn a lonely pool into an integrated outdoor entertaining area.



### VAULTED VIEWS

Overlooking the gardens and pool, the high-ceiling screen porch, *right*, features interchangeable glass and screen panels for comfortable three-season use.

### LAYERS OF LANDSCAPE

A backyard terrace, *below*, provides a gentle transition to the pool and the outer grounds of the property.



## Original appeal

From any vantage point, the home has a classic Cape Cod feel to its styling, from the shingles and colors to the respect for tradition. Yet the architectural plan is more than just an imitation of the old. It approaches a modern take on the vernacular, perfecting interior space for natural light and water views.

“It’s a Shingle-style house and a response to the grand old Shingle houses first established here when the area was originally settled in late 1800s,” Catalano says. “But there is a distinction between a house with shingles and Shingle-style houses. This is a more expressive form that reflects the way we live now.”

Architect **Thomas Catalano** Builder **Steven J. Bishopric** Interior Designers **Nicole Kuckly Perez** and **Martin Perez** Landscape Architect **Katherine Field**

RESOURCES ON PAGE 112

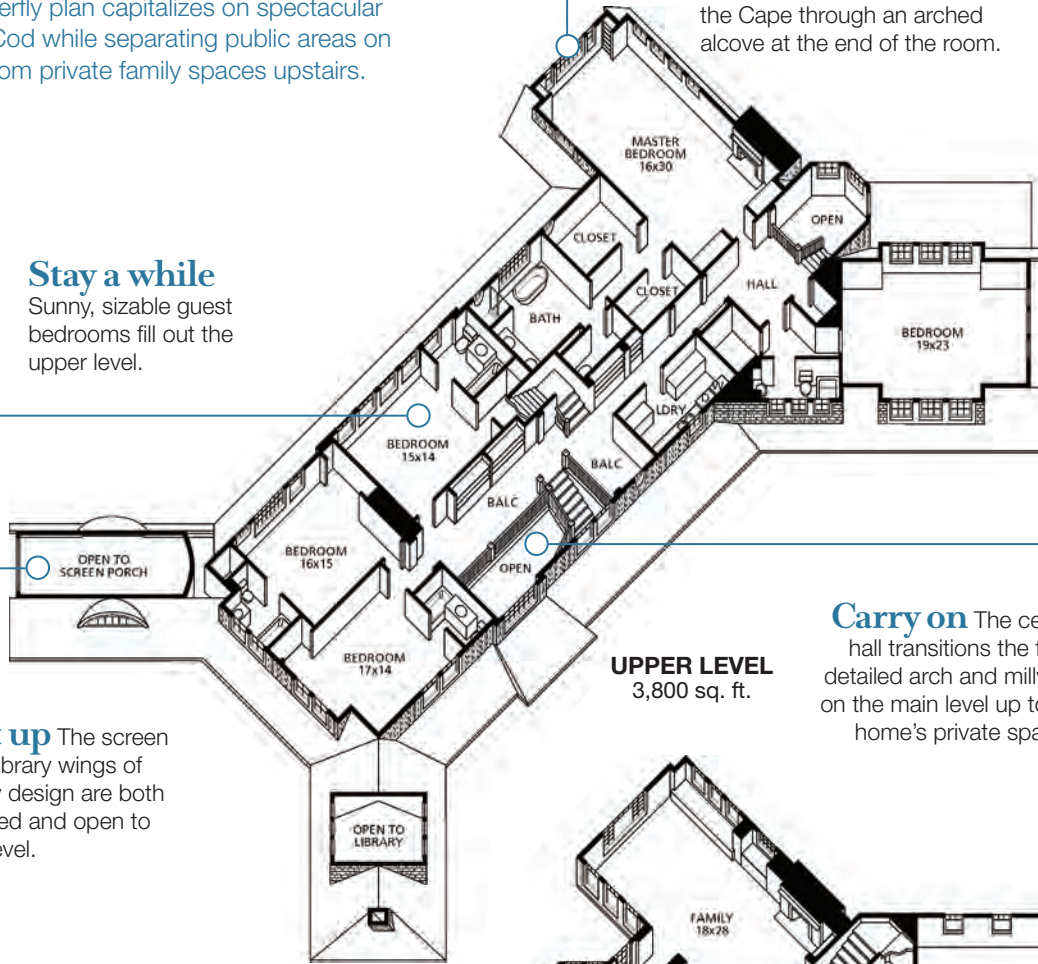
# Maximum views, ultimate retreat

A two-level butterfly plan capitalizes on spectacular views of Cape Cod while separating public areas on the main level from private family spaces upstairs.

**See to the sea** The master bedroom offers lovely views of the backyard pool and the Cape through an arched alcove at the end of the room.

## Stay a while

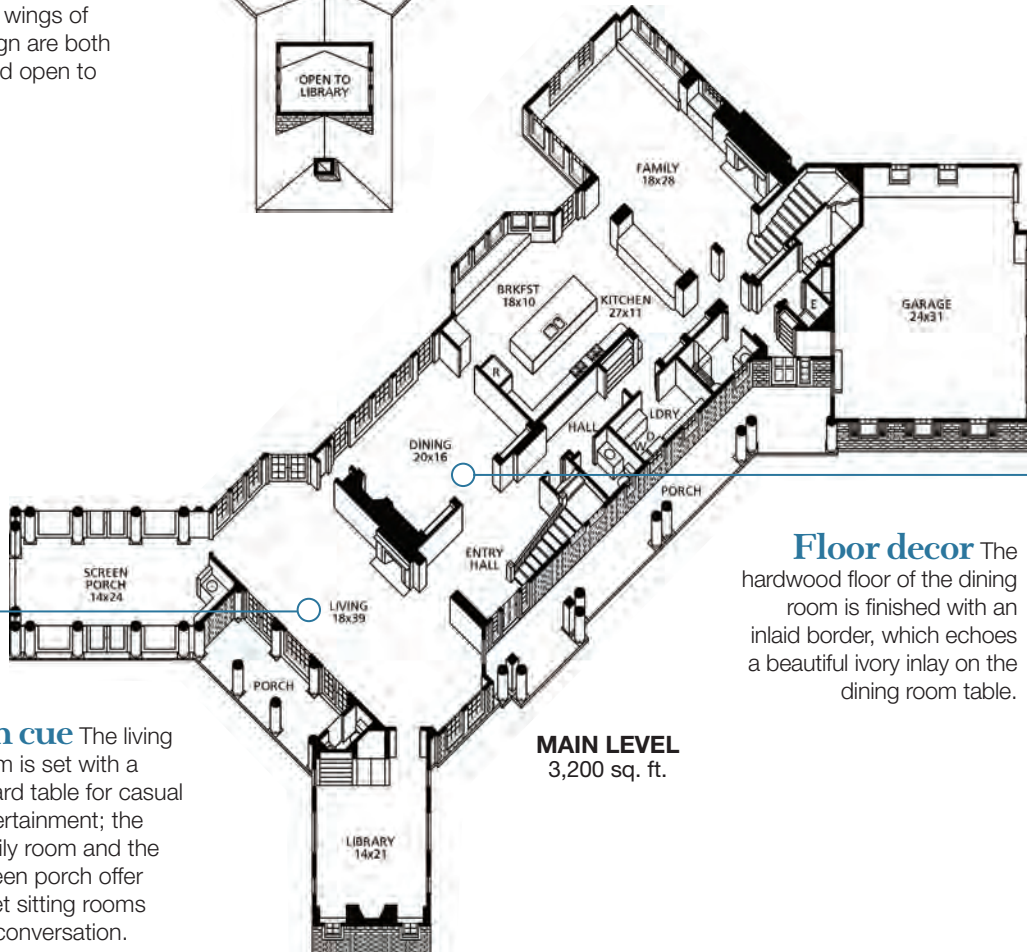
Sunny, sizable guest bedrooms fill out the upper level.



**UPPER LEVEL**  
3,800 sq. ft.

**Carry on** The central hall transitions the finely detailed arch and millwork on the main level up to the home's private spaces.

**Open it up** The screen porch and library wings of the butterfly design are both high-ceilinged and open to the upper level.



**MAIN LEVEL**  
3,200 sq. ft.

**Floor decor** The hardwood floor of the dining room is finished with an inlaid border, which echoes a beautiful ivory inlay on the dining room table.

**On cue** The living room is set with a billiard table for casual entertainment; the family room and the screen porch offer quiet sitting rooms for conversation.